

NATURAL
WOOD
FLOOR
Slim Collection



www.egopremium.com



THE SIZE 0 FOR FLOORS. PRESENTING THE SLIM COLLECTION FROM EGO.

When everything is going stylishly slim, why not your wooden flooring. Presenting skillfully engineered wooden flooring from the Natural Wood Collection – the Slim Collection. Specifically developed using the latest technologies and innovation, it might just be what you have been looking for.

With more than 20 years of experience, Ego has moved beyond being just a name in the Indian interior design industry. With an extensive range of laminated wooden floor, engineered flooring, solid wood flooring and deck, the company offers the most comprehensive wooden flooring solutions. In keeping with this, Ego is proud to present, yet another innovation in the engineered wooden floor industry, the Slim Collection.

SLIM COLLECTION

► SLIM COLLECTION

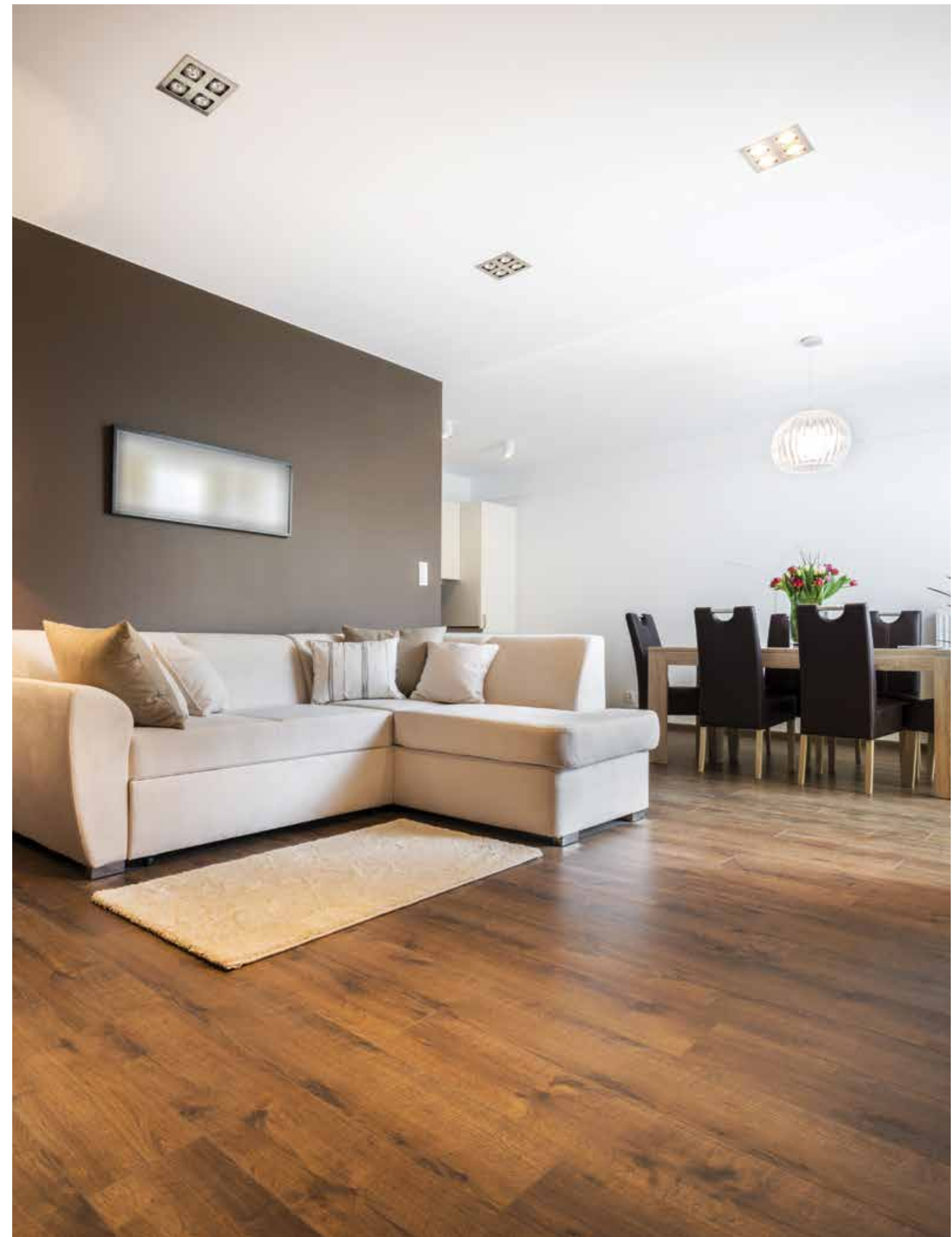
The Slim Collection comes with a wide variety of colors, species and finishes to create a unique look. Give your floor a slim and sleek wood finish for a true touch of elegance. It has a real wood top of about 2 mm and a much narrower width, making it slim. It also has many species of timber put together, to bring both beauty and stability in one product. It is eco-friendly and less susceptible to the negative effects of moisture because of its unique construction and intelligent design. Cork layers below the floor actually reduces the noise by 50% and doesn't let moisture of any kind seep into the floor, making the floor last longer.

The floor is stable because of the HDF. They don't warp or creek like other wooden floors. Moreover, the unique Clic system makes it easy to fix or remove. Try using it on a narrow room to make it look bigger while the European finish on the surface makes it look sleeker. The collection is easy on the pocket and come with a 10 year residential warranty 3 year commercial warranty.

► FEATURES

- Made of finest material and with advanced technology
- Lab-designed protection layer on the bottom
- Extremely stable performance, providing a perfect base for your home
- Dimension – 12(2+10+2) x 127 x 1200mm, 15(2+11+2) x 125 x 1200mm, 12(2+8+2) x 121 x 910mm
- Click system
- Cork sheet backing to reduce sound and act as moisture barrier.

ITEM	REQUIREMENT	RESULT	BACKER
NUTS	SINGLE MAX DIAMETER, MM	4	50
HOLE	SINGLE MAX DIAMETER, MM	2, NEED FILLED	15
LIGHT BARK	SINGLE MAX LENGTH, MM	30	NO LIMITED
SINGLE MAX WIDTH, MM	4		
DARK BARK	SINGLE MAX LENGTH, MM	15	NO LIMITED
SINGLE MAX WIDTH, MM	2		
RESINOCYST, RESIN CHANEL	SINGLE MAX LENGTH, MM	5<1	NO LIMITED
COLOR CHANGING	LESS THAN PLANK AREA, %	20, COLORS OF SURFACE IS COORDINATED	
CRACK		NOT ALLOWED	
ASSEMBLE GAP, HORIZONTAL	SINGLE MAX WIDTH, MM	0.5	
SINGLE MAX WIDTH, LESS THAN LENGTH OF PLANK, %		20	
ASSEMBLE GAP, VERTICAL	SINGLE MAX WIDTH, MM	0.5	
BUBBLE DELAMINATION		NOT ALLOWED	
EDGE MISSING		NOT ALLOWED	
LACQUER BUBBLE	<0.5MM	LESS THAN 3 FOR EACH PLANK	
PIN HOLE	<0.5MM	LESS THAN 4 FOR EACH PLANK	
MOISTURE CONTENT	8-12%	Average 8.8%	



OPAL



TANZANITE



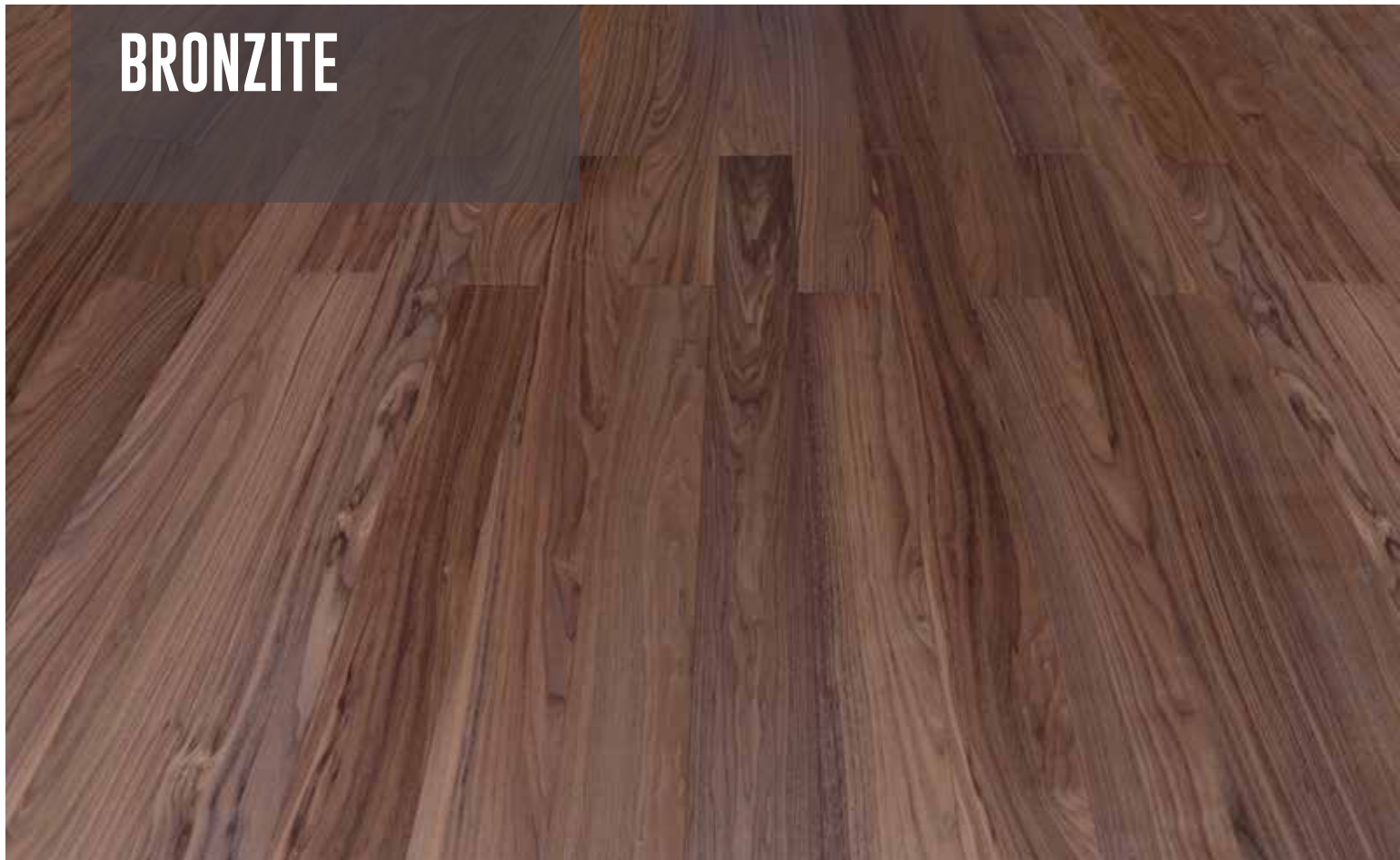
JASPER



HESSONITE



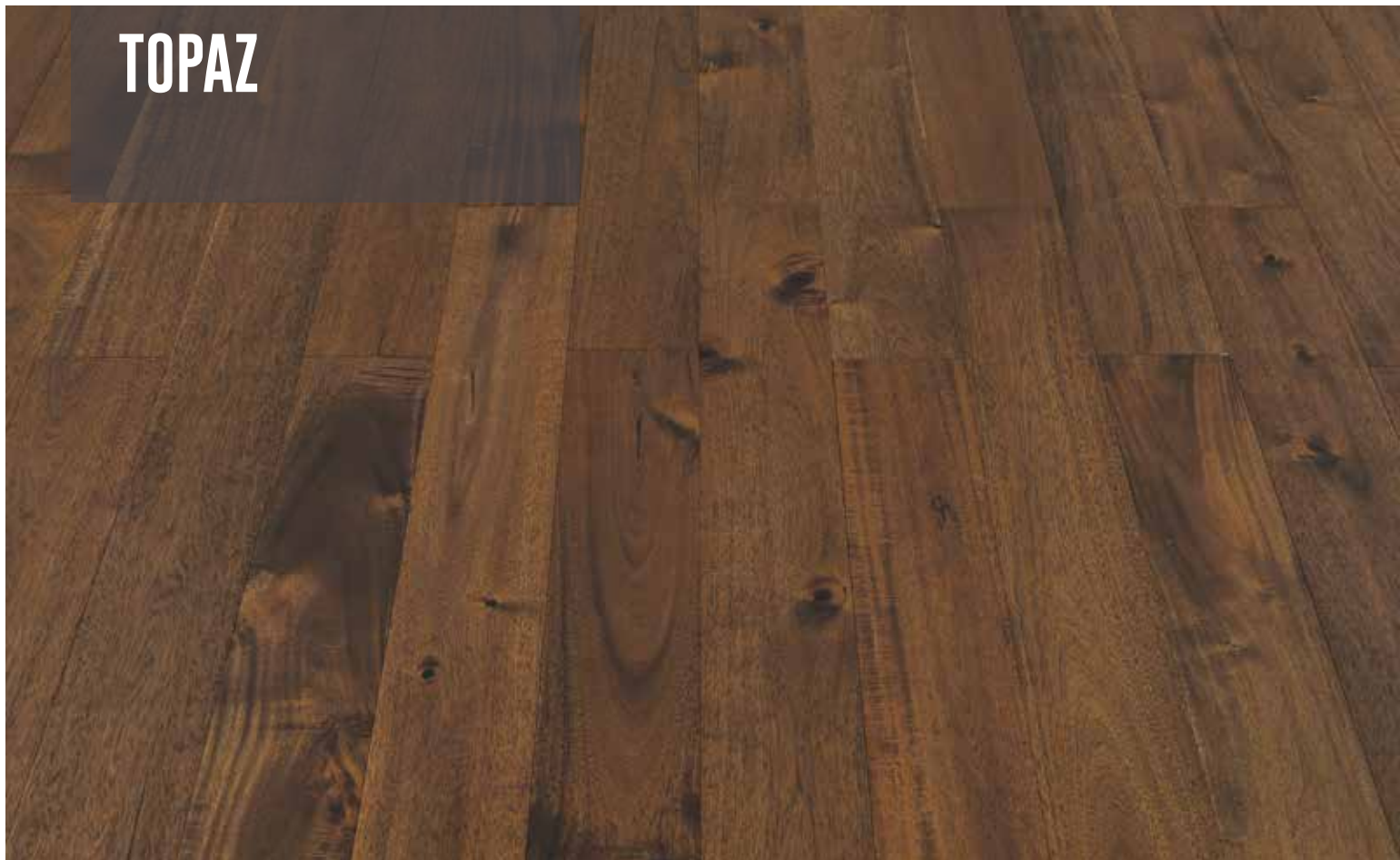
BRONZITE



AGATE



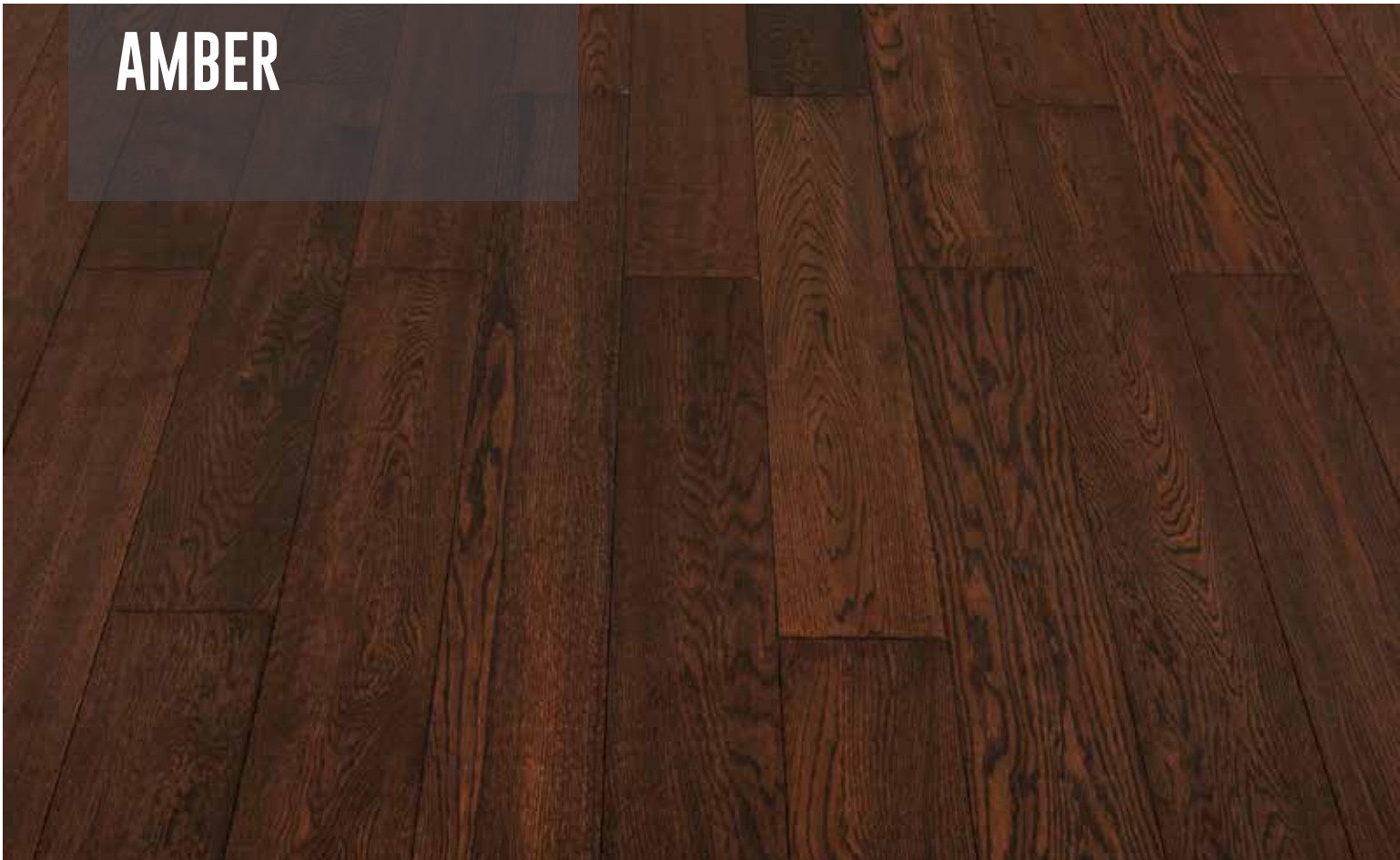
TOPAZ



CARNELIAN



AMBER



ANDESINE



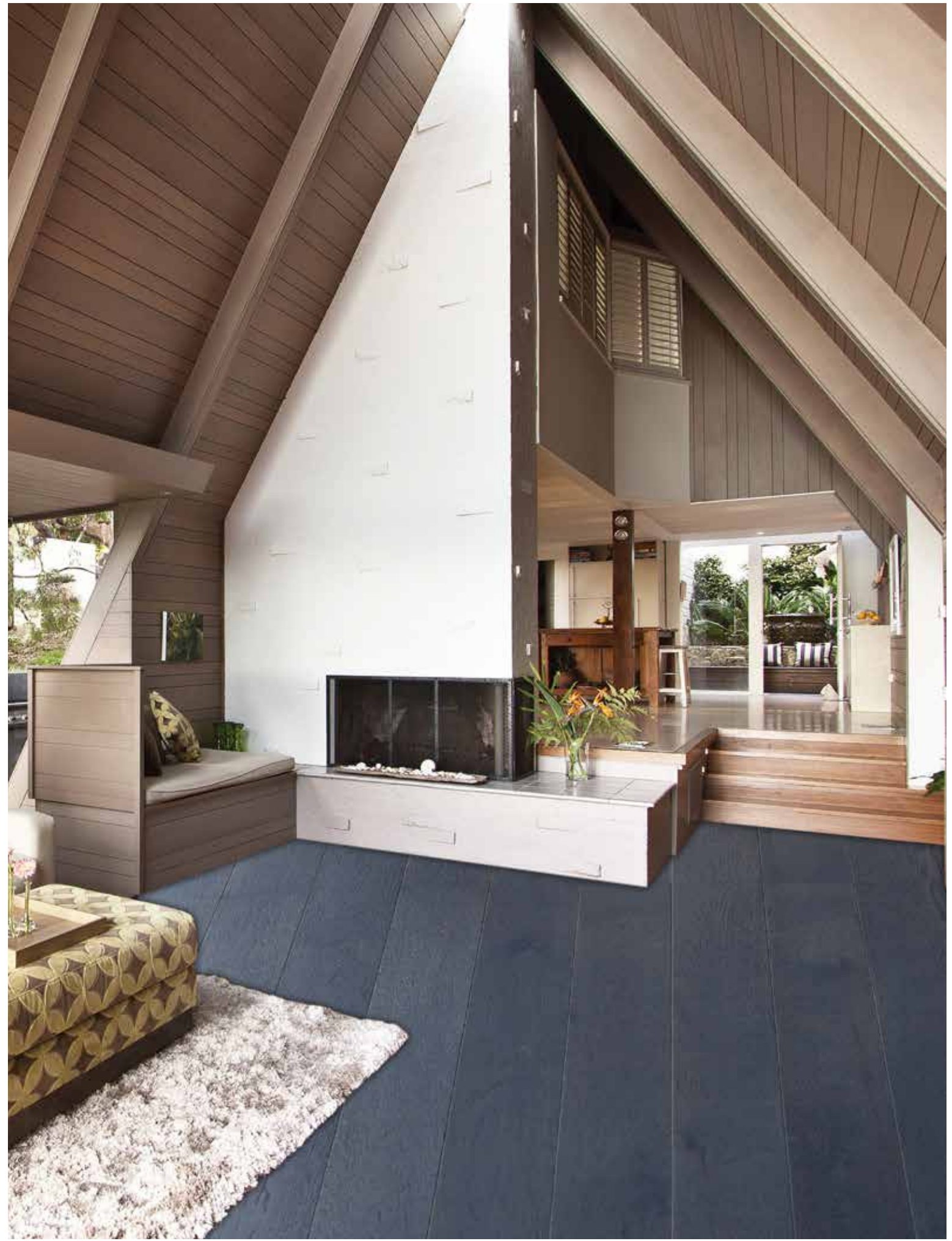
CORAL



HEMALITE



SODALITE



HERRINGBONE COLLECTION

▶ HERRINGBONE COLLECTION

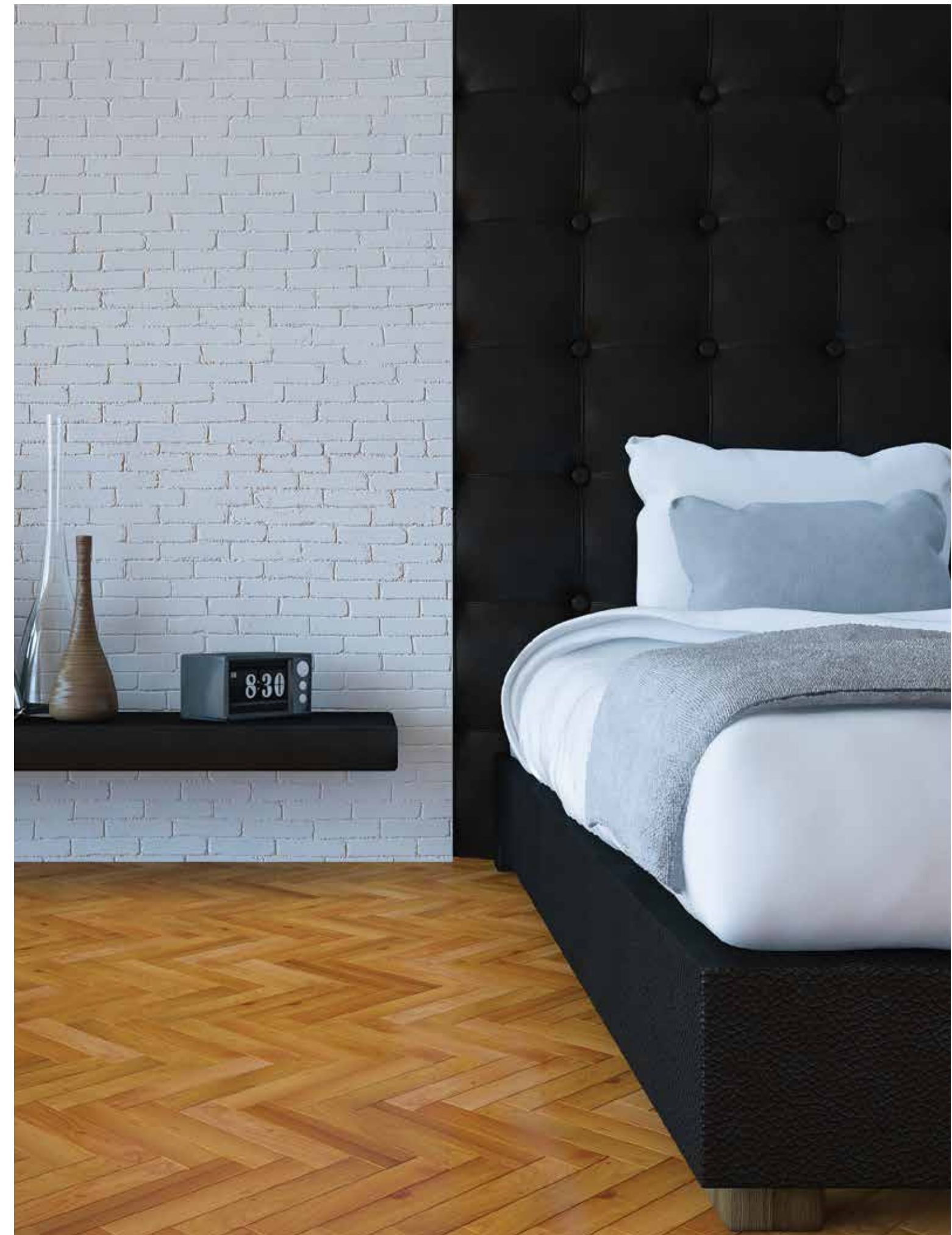
Presenting the Herringbone Collection from Ego. Reflecting the best of flooring techniques, they have been a European traditional floor pattern for a long time. Herringbone is a pattern produced by alternating rows of strip flooring. They are installed one piece at a time, forming several distinct patterns. Most importantly, it can be installed like any other solid wood flooring in a linear form. Look out for our six unique shades in the new Herringbone series From Ego Premium.

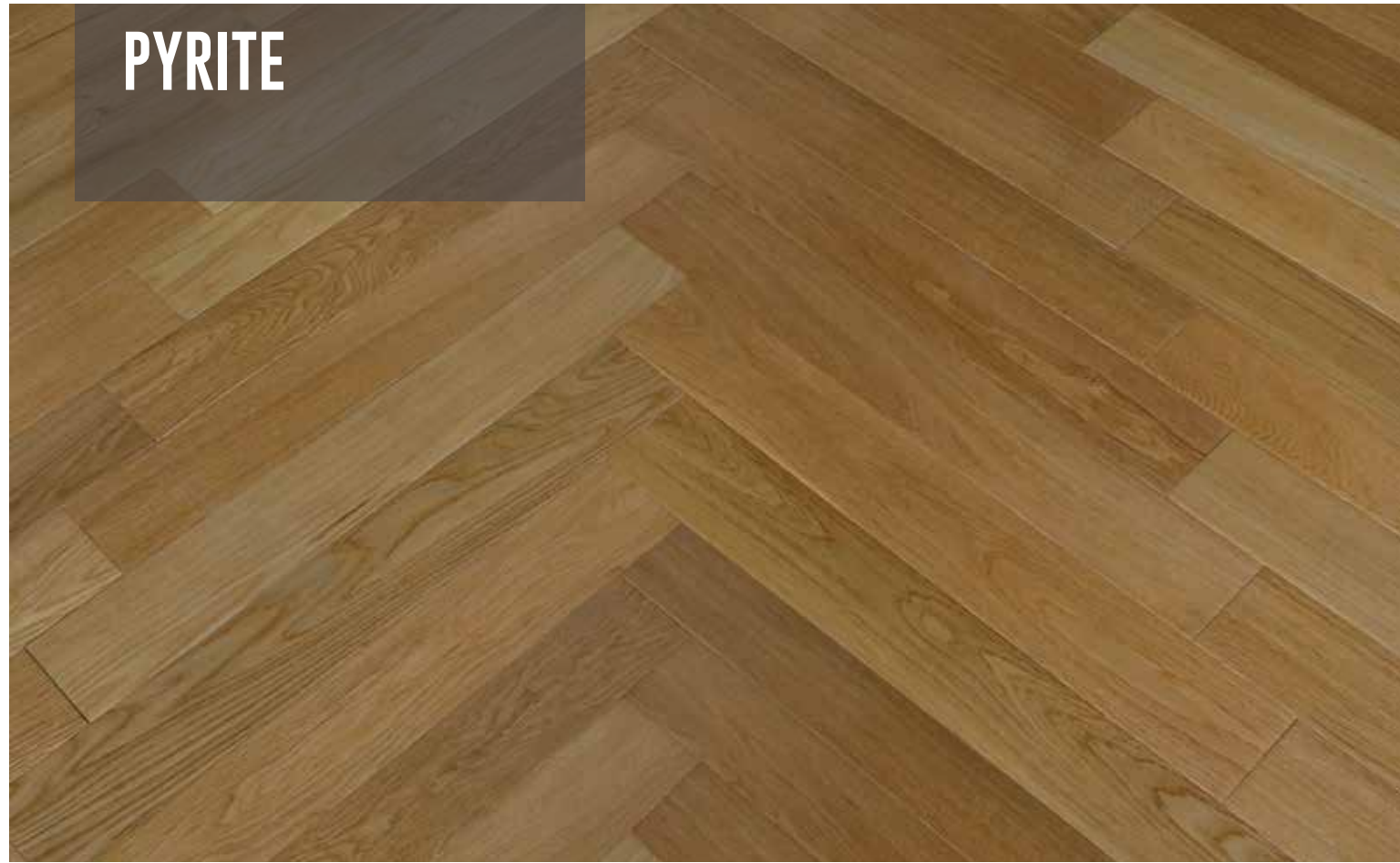
▶ FEATURES

- Slim collection products are made of finest material and with advanced technology
- Clic System
- Lab-designed protection layer on the bottom
- Extremely stable performance, providing a perfect base for your home
- An engineered wood flooring collection with a total thickness of 15mm and top layer being 2mm

15(2+11+2) x 90 x 600mm

ITEM	REQUIREMENT	RESULT	BACKER
NUTS	SINGLE MAX DIAMETER, MM	4	50
HOLE	SINGLE MAX DIAMETER, MM	2, NEED FILLED	15
LIGHT BARK	SINGLE MAX LENGTH, MM	30	NO LIMITED
SINGLE MAX WIDTH, MM	4		
DARK BARK	SINGLE MAX LENGTH, MM	15	NO LIMITED
SINGLE MAX WIDTH, MM	2		
RESINOCYST, RESIN CHANEL	SINGLE MAX LENGTH, MM	5<1	NO LIMITED
COLOR CHANGING	LESS THAN PLANK AREA, %	20, COLORS OF SURFACE IS COORDINATED	
CRACK		NOT ALLOWED	
ASSEMBLE GAP, HORIZONTAL	SINGLE MAX WIDTH, MM	0.5	
SINGLE MAX WIDTH, LESS THAN LENGTH OF PLANK, %		20	
ASSEMBLE GAP, VERTICAL	SINGLE MAX WIDTH, MM	0.5	
BUBBLE DELAMINATION		NOT ALLOWED	
EDGE MISSING		NOT ALLOWED	
LACQUER BUBBLE	<0.5MM	LESS THAN 3 FOR EACH PLANK	
PIN HOLE	<0.5MM	LESS THAN 4 FOR EACH PLANK	
MOISTURE CONTENT	8-12%	Average 8.8%	



PYRITE**ARAGONITE****SCAPOLITE****AXINITE**

WILUITE



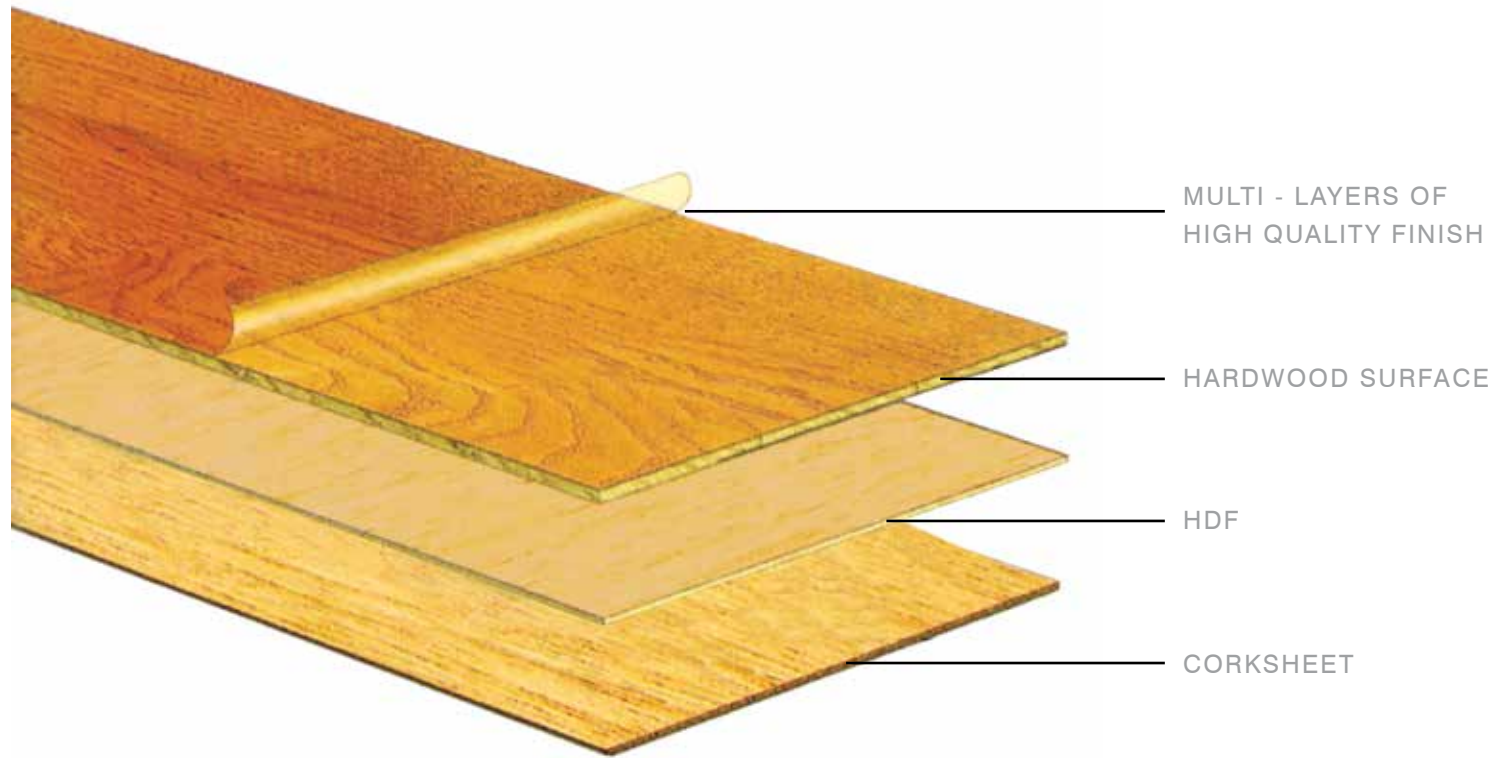
FLUORITE



EGO RETAIL NETWORK



PANEL CONSTRUCTION



EGO PROFILES

▶ Ego Profile match our flooring in quality and shade. These profiles come in various shapes and cover all kinds of corners. Unlike locally procured profiles, Ego profiles ensure that the warranty on Ego flooring remains intact as long as its valid. Ego profile are 0.6mm thick with a high grade fiber board which makes it highly durable and long lasting. These profile come with channel which are placed behind them so that no nail marks are seen permanently. It is the only flooring company that has its own manufacturing unit with 30 shades available to choose from



T-Profile



Reducer Profile



Skirting



Stair Nose



End Profile



Beading

Note : These profiles can be made with 100% wood and can be polished to match the flooring colors.

HERRINGBONE INSTALLATION

► PREPARE THE SUB FLOOR:

- Concrete slab - Check the slab to see that it is properly constructed and thoroughly dry. Check for unevenness, grind off high spots, and use filling compound for low case.
- Plywood subfloors - It should be at least ¾" thick and nailed down well. Tough standing may be required at joints to even out surface. Where the subfloor is too uneven, apply 3/8" plywood underlayment.
- Board subfloor (up to 6' square edged) - They require good nailing. If uneven, boards may require standing. Nail 3/8" plywood underlayment on boards.

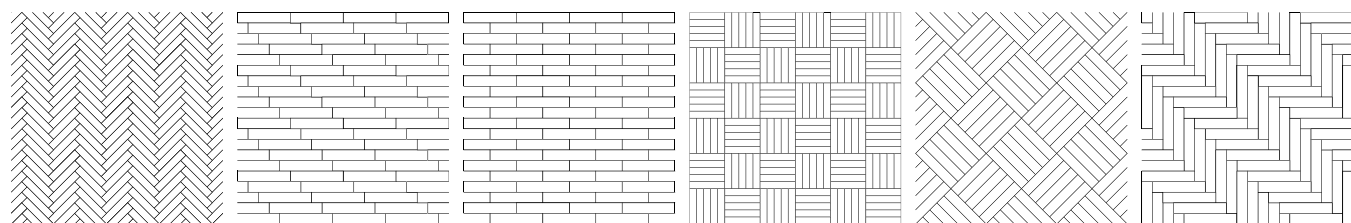
LAYOUT OF THE ROOM:

1. Check the room for squareness, measure the diagonals of the room. If they are equal, the room is square.
2. Herringbone is, at best, a difficult pattern to ut down. Two things must be considered when deciding on the orientation of the Herringbone pattern.
 - a. The long dimension of the room.
 - b. The pattern running to the major architectural interest point oof the room, like the main entrance, window wall, or a fireplace.
3. Pre-plan your working lines. It is usually best to center your first line along the orientation of the pattern. This is called the "centerline." Plan the layout

START INSTALLING FLOORING AT INTERSECTION OF ALL WORKING LINES.

(The selected center point of a Herringbone unit will be along the centerline.)

1. Place the first piece of flooring. The tongue edge of the piece should face the far wall, with the tongue edge along the starter diagonal. The left corner of piece#1 should be allined with the intersection of the reference line and baseline.
2. Place the second piece. This piece must be perpendicular to the first piece. Use a small carpenter's square to ensure precise alignment. These two piece determine the squareness of the entire installation. After a piece has been placed in the mastic, there can be minor adjustments in alignment by tapping the piece with a rubber mallet or similar non-marring instrument.
3. Continue placing the pieces in the order. Continue with the pattern until reaching the far wall. Then work the pattern to the right, one row at a time, alternating the direction of the flooring. (Always orient the tongue in the same direction.) Start each row carefully. Use the square to align the starting piece on each row and periodically check alignment. Leave piece that fit along walls as the last step.
4. Upon completing the upper right quadrant, go back to the intersection of the working lines and complete the upper left quadrant one row at a time. Carefully align the first piece of each row and periodically check alignment with the carpenter's square. Alternate the direction of the flooring in to the work area. Store it on areas already completed.
5. Continue in the two remaining areas. Start at the centerline and continue working the pattern backwards. When installing the pattern backwards it is easiest to maintain alignment by coming back with double rows. The first double row back into the lower left and right quadrant will be aligned with the reference line. After completing the first double row, continue installing two rows at a time until reaching the left wall. Finish lower right quadrant in the same manner, working from center too walls.
6. Cut pieces to within ¼ " of the walls. This ¼" is expansion space. Fir flooring into doorways where it is to butt against other flooring, or against a reducer strip. Leave ¼" expansion space around masonry structures, such as a fireplace. (This void can be filled with a solid piece of crok and stained)
7. Use spot cork blocking around the perimeter of the room between the flooring and the walls, to allow the flooring to expand and contract. (Do not use flooring scraps.)



GENERAL MAINTENANCE

► General

- It is the general perception that maintenance of woodflooring is costly and tedious. However, being coated with Anti-Scratch finishes, users can now enjoy the beautiful and easily maintained Ego Naturalwood floor hassle-free.
- Ego Naturalwood floor is suitable for installation in almost any residential building.
- It can be installed over concretes labs or hard surface floors.
- However, wooden floors are sensitive to wetness, excessive humidity and excessive drought. At installation, the rule to apply in order to extend the lifetime of the floor is that the relative atmospheric humidity (RH) should be between 45% and 60%. Use in Kitchen
- Prevent direct water-contact.

Aesthetic Nature

- Ego Naturalwood is made entirely of genuine, esthetic and beautiful naturalwood.
- In order to maintain its beauty, placing a quality doormat on both the inside and outside of entrances is recommended to prevent scratches caused by abrasive grit and dirt.
- Being made of genuine wood, every board is unique and therefore no photographs or samples can be exactly reproduced with exact colours, grains and tint.

DO's

- Support furniture and heavy appliances with wide-bearing, on-staining glides or casters.
- Move appliances/furniture by sliding them slowly over the floor on a clean piece of carpet turned upside down.
- Place area rugs in high traffic concentrated area to make long term maintenance easier and less expensive.

DON'TS

- Do not wax the floor.
- Avoid spiked-heel shoes, pebbles and other abrasives.
- Do not use steel wool on the floor.
- Do not use soap or detergents on the floor and never pour water directly on to the floor.
- Do not use ammonia-based cleaners.
- Do not use extremely wet mop to clean the floor.

Finishing

- Anti-Scratch top coat

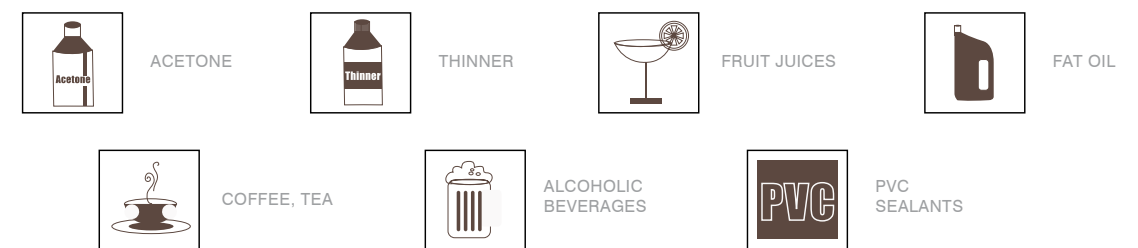
Recommended Maintenance

- For general cleaning, use a dust mop or vacuum.
- Keep grit off the floor. Dust, mop or vacuum regularly and keep door mats clean.
- Wipe spills promptly with dry cloth. Use a slightly dampened cloth for sticky spills.
- Should staining occur from food, ink, grease, lipsticks, cigarette burn, crayon, wax or nail polish, the following should be done:
 - Firstly, wipe with damp cloth.
 - If unsuccessful, use mild detergent (PH6-8)
 - If the stain persists, use acetone. Under normal circumstances, acetone should be able to remove the stain.
- Avoid scrubbing with abrasive material and using strong solvent or detergent.

Refinishing

- Ego Naturalwood floors can be re-sanded and re-finished 2-3times. However, consultation with specialists is strongly recommended.

Resistance Against



NORTH: NewDelhi • Noida • Gurgaon • Ludhiana • Jalandhar • Lucknow • Kanpur • Varanasi • Meerut
• Bhilwara • Bikaner • Jaipur • Kota • Ajmer • Udaipur • Bareilly • Chandigarh • Allahabad
• Hisar • Amritsar • Gwalior

WEST: Ahmedabad • Dessa • Surat • Baroda • Rajkot • Mumbai • Pune • Satara • Ahmednagar • Kolhapur
• Nanded • Solapur • Nasik • Nagpur • Aurangabad • Baramati • Goa • Indore • Bhopal • Jabalpur

SOUTH: Bengaluru • Gulbarga • Shimoga • Bellary • Mangalore • Mysore • Coimbatore • Hubli • Davangere
• Belgaum • Thiruvananthpuram • Salem • Calicut • Kannur • Chennai • Erode • Madurai • Kochi
• Hyderabad • Vizag • Vijaywada • Vadakara

EAST: Kolkata • Siliguri • Bhubaneshwar • Raipur • Ranchi • Jamshedpur • Guwahati • Patna • Tinsukia • Aizwar



Corporate Office : Universal Majestic, 06th Floor, Room Number 606, CTS No. 4A/8/1, Village Borla,
P. L. Lokhande Marg, Chembur (west). Mumbai - 400 043.

Tel: +91 22 25500265 | Email : sales@egopremium.com | Website : www.egopremium.com